

RNA COMPONENTS

SRA-Z300 Round Drive – slim and powerful

- Easier to assemble: optimised screw alignment for simpler and faster installation
- Energy-efficient: lower power consumption through the use of smaller magnets with high performance
- Service and installation optimised: two-piece jacket for easier installation and better accessibility

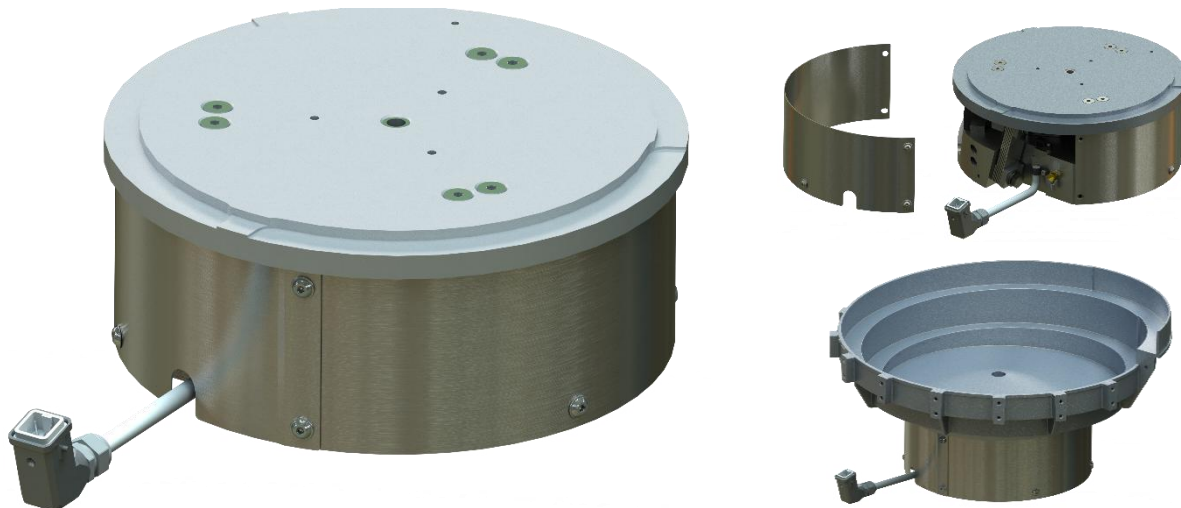
The compact bowl drives of the **SRA-Z series** stand for high reliability, **low susceptibility to faults** and **consistently stable conveying performance** – made possible by the use of **high-performance magnets**. With an oscillation frequency of 100 Hz, they offer particularly smooth, quiet running. This makes them ideal for sorting the smallest parts and for precise, reliable interface transitions.

The newly developed **SRA-Z300-2** is one of the **lowest drives** in the RNA product range. As a **low-profile drive unit**, it is **around half the height** of an RNA drive in size 250 – perfect when installation space is critical. Its design incorporates the combined **expertise of over 30 years of feeding technology**.

The **SRA-Z300-2** is ideal for **3D-printed and milled bowls**. Thanks to **direct mounting, no adapter plate** is required. **Firm centring with 3-point support** ensures a secure fit and reproducible alignment.

In addition, the **magnet position at 15°** ensures **optimum force transmission to the spring assembly** – for smooth running and particularly stable delivery characteristics.

Technical Data



Type	SRA-Z 300-2
B = outside drive Ø (mm)	195
Bore diameter of vibration damper (mm)	186
Isolator pitch (degrees°)	120
Isolator fastening thread (metric)	M8
Central fastening of feeder bowl (metric)	M12
b = height of drive (mm)	132,5
Weight of drive (kg)	33
Max. weight of feeder bowl (kg)	10
Max. filling weight (kg)	10/2
Current input (A)	1,8
Vibrating frequency (Hz / min-1)	100 / 6000
Connecting cable length (m)	1,5
Nominal voltage: Magnet voltage / frequency (V/Hz)	200 / 50
Implemented standard(s)	CE